

## Electrical

- Standard 230V, 50/60Hz power supply (others available on request)
- Lamp-holder type G 22 (GY 16 optional)
- 2m power supply cable (plug available on request)
- Strain relief cable clamp entry into light housing

## Optical

- Independent lens system 7° to 16°
- 4 removable shaping shutters mounted between plates specially treated with anti-abrasive surface
- 18-leaf iris diaphragm with black-out
- Spherical reflector in 99.99% polished and treated aluminium
- Optical tempered glass internal lens; diameter 150mm
- Optical glass external lens; diameter 230mm

## Safety

- Automatic power cut-out by bipolar microswitch on opening the lamp-tray
- Filter-frame locking system
- Compliance to CE EN 60598-2-17 standards

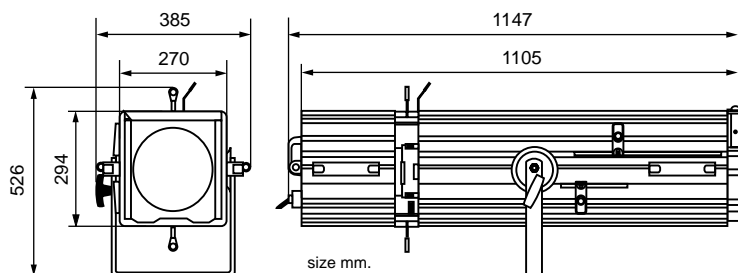
## Mechanical

- Die-cast extruded aluminium housing
- External black anti-scratch Epoxy Resin paint
- Black optical internal paint to give no light reflection and high-temperature resistance
- Labyrinth ventilation to avoid spill light

## Operational

- A size gobo holder slots covered by a sliding door to prevent the accessories from falling out and to avoid spill light
- Exclusively designed zoom and focusing system with fast locking levers
- Double sliding door to access lenses for maintenance
- Lamp-tray hinged to the housing and completely removable for easy maintenance
- Yoke with 10mm diameter hole, reversible and sliding into extruded rails to allow installation, focusing and balancing of the accessories
- Accessory top covered by a door
- Heat insulated knobs and handles
- Lamp-holder mounted onto an easily adjustable plate for lamps ranging from 2000W to 2500W
- Optimum working distance 10 to 25m

VEDETTE 25 H



Net weight Kg 26.9  
Gross weight Kg 32.2  
Box volume m<sup>3</sup> 0.230

## Information for ordering accessories and different versions

## Code

- Vedette 25 H with iris diaphragm with black-out

VD 25 H

### Accessories

- Folding telescopic stand
- DIN / 10MA spigot adaptor
- Colour filter frame
- Gobo-holder for A size gobos
- Manual colour changer (6 colours)
- DMX 512 or 0/10V controlled colour changing scroller
- Set of wheels with brake for use with stand

BS  
DIN P 10  
TCS25  
PGA 185  
CMA 25  
on request  
RF

### Options

- 100-120V lamp version
- GY 16 lampholder version

on request  
on request

## Lamps

## Film/TV/Theatre (3200 °K)

Type / Order code	CP75	CP92	CP91	CP43/72 on request
Power (W)	2000	2000	2500	2000
Light-centre/base distance (mm)	75	90	90	70
Lampholder	G22	G22	G22	GY16
Luminous flux (Lumen)	50000	50000	65000	50000
Life time (hours)	480	400	450	480
Colour temperature (°K)	3200	3200	3200	3200
Supply voltage (V)	230	230	230	230
Nominal current (Amp.)	8.6	8.6	10.8	8.6