

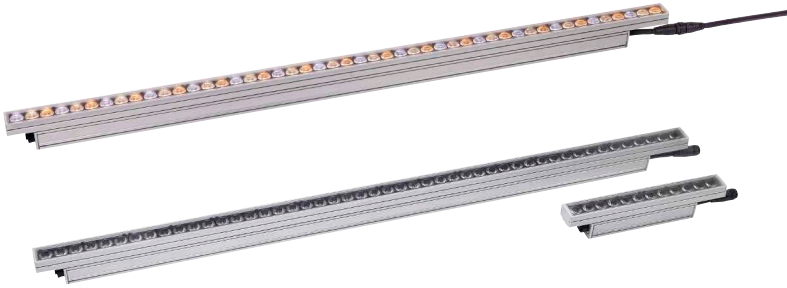
EXTERIOR LINEAR PRO GRAZE CTC

OUTDOOR LINEAR GRAZE FIXTURE WITH COLOR TEMPERATURE CONTROL

SPEC SHEET

HIGHLIGHTS

- Warm, neutral and cold white LEDs (2700K, 4000K, 6500K) (12 LEDs/ft)
- Selectable segment modes
- Selectable power consumption and integrated multi-range power supply unit for long fixture runs
- Hybrid power and data connector for easy daisy-chained configurations
- Rugged IP66 housing designed for permanent outdoor installations
- Low weight - 0.8 kg/ft (1.9 lbs/ft)
- Compact design - 40mm (1.57 inch) width



OVERVIEW

Martin Exterior Linear Pro Graze CTC lights are compact, LED-based architectural fixtures, available in 1 and 4 foot lengths, making them easier to integrate into architectural elements. Delivering uniform light distribution at a 9 degree beam angle, they are ideal for illuminating textured surfaces, high walls and linear structures in permanent indoor/outdoor locations, emphasizing architectural features in stadiums, bridges, tunnels and other applications. CTC Graze models feature color temperature control (2700K, 4000K, 6500K), a high color rendering index (CRI) and 12 LEDs/ft delivering outputs of 800 lm/ft.

KEY MESSAGES

EASE OF INSTALLATION

The slim design makes them easier to integrate into architectural elements discreetly and with less structural requirements. A smart mounting plate design allows for a variety of standard or custom bracket solutions.

SMART INFRASTRUCTURE

Fixtures are DMX-controllable and easy to install due to their integrated universal power supply. They can also be daisy-chained using a combined power and data connector, which enables long fixture runs for simpler infrastructures.

SUPERIOR COLOR TEMPERATURE CONTROL

Cold, neutral, and warm LEDs are included for precise color temperature control from 2700K to 6500K at high efficacy with 12 LEDs/ft. They also feature a high color rendering index (CRI) for accurate reproduction of colors.

EFFICIENT OPERATION

With more than 60 lm/W, Exterior Linear Pro CTC fixtures are highly efficient. Multiple power modes (12W/10W/5W, including ASHRAE compliance) can be set via Remote Device Management (RDM) to reduce power consumption as needed.

EXTERIOR LINEAR PRO GRAZE CTC

OUTDOOR LINEAR GRAZE FIXTURE WITH COLOR TEMPERATURE CONTROL

SPEC SHEET

FEATURES

- Warm, neutral and cold white LEDs (2700K, 4000K, 6500K) (12 LEDs/ft)
- Narrow 9° beam angle
- Interchangeable micro lens film for alternative beam angles
- Selectable segment modes (1, 4 or 8 segments)
- Selectable power consumption (12W/10W/5W) per foot
- Integrated multi-range power supply unit (PSU) 100-277V for long fixture runs
- Hybrid power and data connector for easy daisy-chained configurations
- DMX and RDM control
- Integrated magnetic switch for local diagnostics
- Rugged IP66 housing designed for permanent outdoor installations
- Low weight 0.8 kg/ft (1.9 lbs/ft)
- Compact design - 40mm (1.57 inch) width

ORDERING INFORMATION

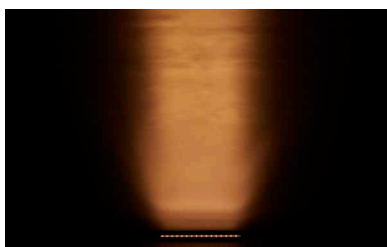
- Exterior Linear Pro GRAZE CTC 1ft.....P/N MAR-90570006
- Exterior Linear Pro GRAZE CTC 4ft.....P/N MAR-90570008

RELATED ITEMS

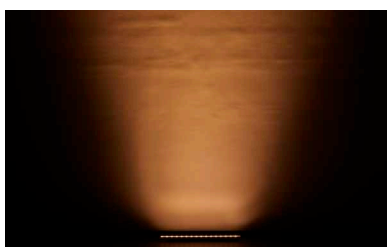
- Martin Companion Cable.....P/N MAR-91616091
- Martin Companion Cable (for firmware update over DMX): Free download from www.martin.com

ACCESSORIES

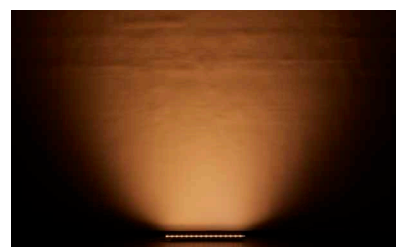
- Glare shield, EL Pro 1ft set of 4.....P/N MAR-90570022
- Glare shield, EL Pro, 4ft set of 4.....P/N MAR-90570023
- Louvre, EL Pro CTC, 1ft set of 4.....P/N MAR-90570028
- Asymm diffuser Wide EL Pro 4ft.....P/N MAR-90570020
- Asymm diffuser Narrow EL Pro 4ft.....P/N MAR-90570021
- Adjustable bracket EL Pro 10 pcs.....P/N MAR-90570025
- Flange bracket EL Pro 10 pcs.....P/N MAR-90570026
- Quick mount bracket EL Pro 10 pcs.....P/N MAR-90570027
- Junction Box Power DMX to PD.....P/N MAR-91700019
- Power DMX Cable PD PD 0.2M EU.....P/N MAR-91700004
- Power DMX Cable PD PD 1M EU.....P/N MAR-91700005
- Power DMX Cable PD PD 2.5M EU.....P/N MAR-91700006
- Power DMX Cable PD PD 5M EU.....P/N MAR-91700007
- Power DMX Cable PD PD 10M EU.....P/N MAR-91700008
- Power DMX Cable 100M Roll EU.....P/N MAR-91700009
- Power DMX Cable PD PD 0.2M US.....P/N MAR-91700010
- Power DMX Cable PD PD 1M US.....P/N MAR-91700011
- Power DMX Cable PD PD 2.5M US.....P/N MAR-91700012
- Power DMX Cable PD PD 5M US.....P/N MAR-91700013
- Power DMX Cable PD PD 10M US.....P/N MAR-91700014
- End termination cap PD.....P/N MAR-91700015
- Power DMX Cable 100M Roll US.....P/N MAR-91700016
- Field installable connector PD female.....P/N MAR-91700017
- Field installable connector PD male.....P/N MAR-91700018



9°



9° x 30°



9° x 60°

EXTERIOR LINEAR PRO GRAZE CTC

OUTDOOR LINEAR GRAZE FIXTURE WITH COLOR TEMPERATURE CONTROL

SPEC SHEET

TECHNICAL SPECIFICATIONS

DYNAMIC EFFECTS

Intensity	0 - 100%
Color temperature control	2700 K – 6500 K
Segment Control	0.5ft, 1ft or full 4 ft fixture control

CONTROL AND PROGRAMMING

Control systems.....	DMX, RDM
Stand-alone control.....	Up to 20 scenes with individual fade/hold times
Control resolution	8-bit DMX individual color control
Dimmer resolution	16-bit DMX control of intensity
DMX channels 4ft.....	3/3/12/24 (standard/1 seg/4 seg/8 seg)
DMX channels 1ft.....	3/6/3 (standard/1 seg/2 seg)
User interface.....	Magnetic button to call up fixture status and test fixture
DMX compliance	USITT DMX512/1990
RDM compliance.....	ANSI/ESTA E1.20

OPTICS

Light source	White color (2700K, 4000K, 6500K) LED (12 LEDs per foot)
Minimum LED lifetime.....	50 000 hours (to >70% luminous output)*
Beam angle**	9°, 9° x 30°, 9° x 60°
Binning.....	Tight color and flux binning
Calibration.....	Full Gamut Color Calibration (1 step MacAdam ellipse)

*Figure obtained under manufacturer's test conditions

** Asymmetric beam angles available as accessory micro-lens films

PHOTOMETRICS

CRI (Color Rendering Index)	>70 (higher CRI available on request)
CCT.....	2700K - 6500K

Luminous output	1 FT at 12W	4 FT at 12W
2700K	830 lumens	3320 lumens
4000K	870 lumens	3500 lumens
6500K	900 lumens	3600 lumens

* All Photometric Data measured in steady state (30 minutes warm-up time) at 25°C ambient.

CONSTRUCTION

Housing.....	Aluminum
Finish	Clear anodized (standard) or white (optional)
Front.....	Clear polycarbonate
Effective Projected Area (EPA).....	0.04 m ² per ft
Protection rating.....	IP66
IK rating	IK08
Corrosion resistance	C5 High (ISO 12944-6)
Vibration resistance	1.0g, Sinusoidal (IEC 60068-2-6), 0.7g RMS Random (IEC 60068-2-64), 3.0g (ANSI C136-31)

INSTALLATION

Orientation.....	Any
Minimum distance to illuminated surfaces	0.1 m / 0.3 ft.

ELECTRICAL

Power/data in/thru.....	8-pin custom connectors
AC power.....	100-277 V nominal, 50/60 Hz
Power supply unit	Auto-ranging electronic switch-mode
Idle power consumption.....	1ft length :1.54 W, 4ft length: 2.30W (steady state, all LEDs at zero intensity)
Max earth leakage.....	1ft length: 0.15 mA, 4ft length: 0.21 mA
Surge protection.....	4KV
Maximum connected 4ft fixtures*	42 pcs (52 m /169 ft) @ 230V-277V
Maximum total string length (cable + fixtures)*	150 m / 328 ft
Typical half-cycle RMS inrush current ..	0.35 A

* Refer to system diagram for details on fixture run limitations

TYPICAL POWER AND CURRENT

12W mode:

100-240 V, 50/60 Hz:	12 W per foot +/- 1 W, PF 0.95 +/- 0.05
277 V, 50/60 Hz:	12 W per foot +/- 1 W, PF 0.90 +/- 0.05

10W mode:

100-240 V, 50/60 Hz:	10 W per foot +/- 1 W, PF 0.95 +/- 0.05
277 V, 50/60 Hz:	10 W per foot +/- 1 W, PF 0.90 +/- 0.05

5W mode:

100-240 V, 50/60 Hz:	5 W per foot +/- 0.5W, PF 0.90 +/- 0.05
277 V, 50/60 Hz:	5 W per foot +/- 0.5W, PF 0.70 +/- 0.05

Power figures are typical, not maximum. Measurements made at nominal voltage. Allow for +/- 10% deviation. PF = Power factor.

THERMAL

Cooling	Convection
Maximum ambient temperature.....	45° C (113° F)*
Minimum ambient temperature.....	-30° C (-22° F)
Total heat dissipation (calculated, +/- 10%)	41 BTU/hr. per foot

*Above this temperature, the fixture regulates output to protect from overheating

APPROVALS

EU Safety.....	EN 60598-2-5 (EN 60598-1), EN 62471, EN 62493
EU EMC	EN 55015, EN 55032, EN55035, EN 61547, EN 61000-3-2, EN 61000-3-3
US Safety.....	ANSI/UL 1598
US EMC	47 CFR Part 15 Class B
Canadian Safety	CSA C22.2 No. 250.0
Australia/NZ	RCM
Global CB Certification/IECEE	IEC 60598-2-5 (IEC 60598-1)
India	BIS IS 10322[Part5/section5]

EXTERIOR LINEAR PRO GRAZE CTC

OUTDOOR LINEAR GRAZE FIXTURE WITH COLOR TEMPERATURE CONTROL

SPEC SHEET

TECHNICAL SPECIFICATIONS

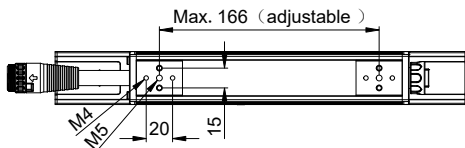
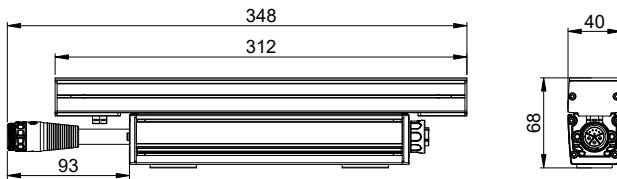
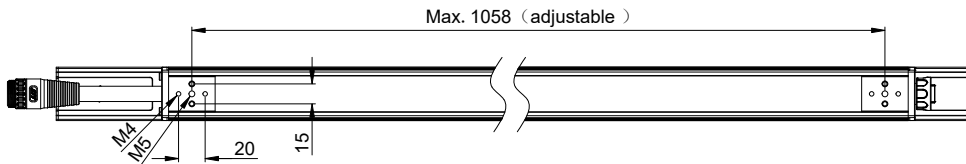
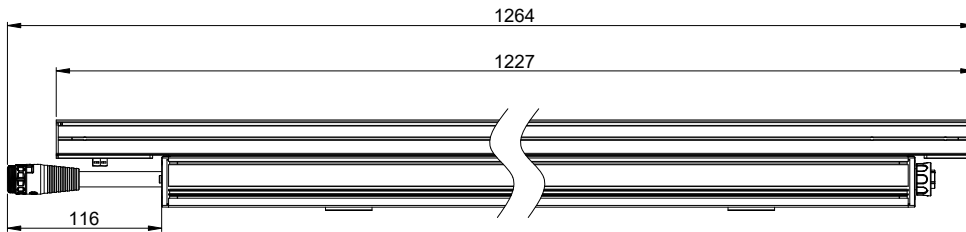
ENVIRONMENTAL

RoHS	Compliant
REACH	Compliant
WEEE	Compliant
Proposition 65	Compliant
FSC	certified cardboard inlay and outer packaging

DIMENSIONS

PHYSICAL

Length - 1 ft Version	312mm (1 ft)
Length - 4 ft Version	1227mm (4 ft)
Width	40 mm (1.57 inch.)
Height	68 mm (2.67 inch)
Weight - 1 ft Version	0.85 kg (1.9 lbs)
Weight - 4 ft Version	2.8 kg (6.2 lbs)



*Brackets must be ordered separately
All measurements in mm*